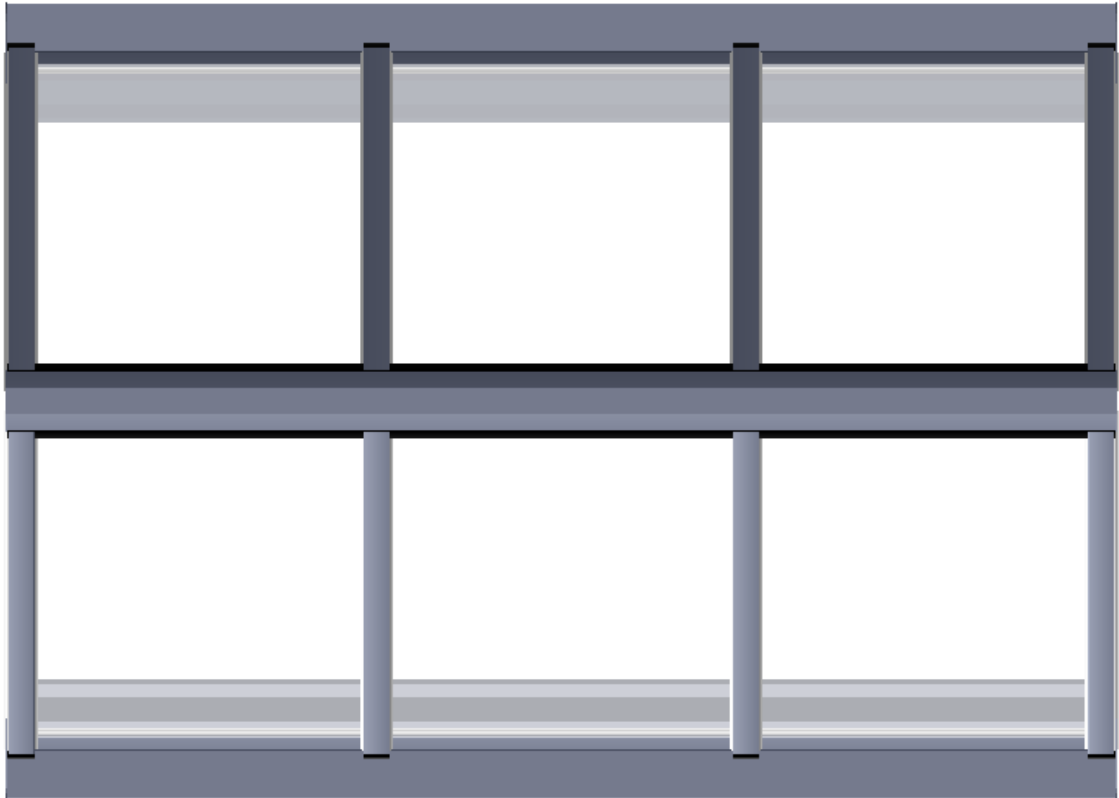




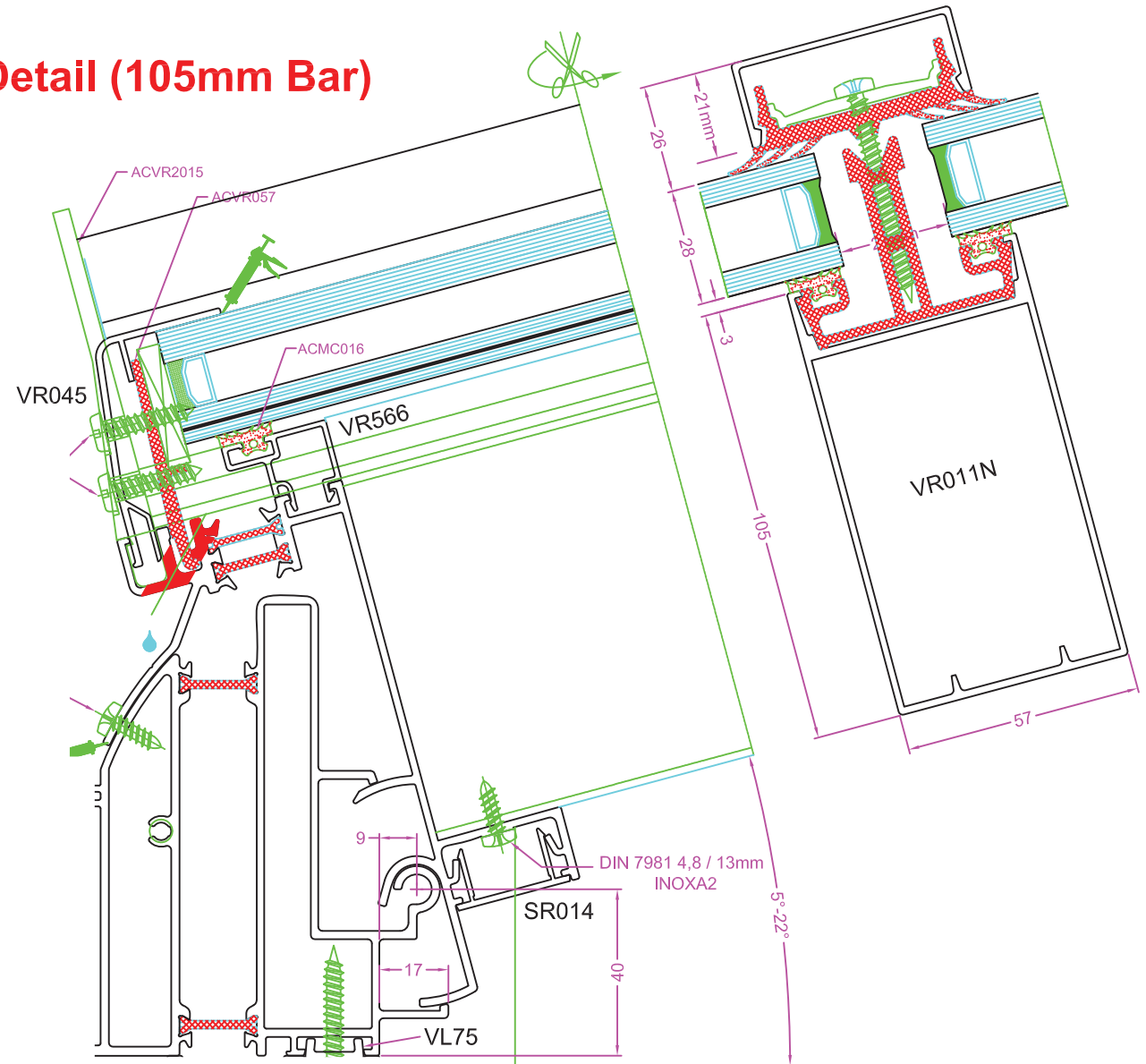
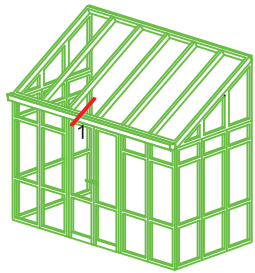
THERMALLY BROKEN ALUMINIUM ROOFLIGHTS

(Scaled 3D Image) Roof Light 2200 x 1300mm @ 30 Deg Pitch

External View



Typical 5-22 Deg Eaves Detail (105mm Bar)

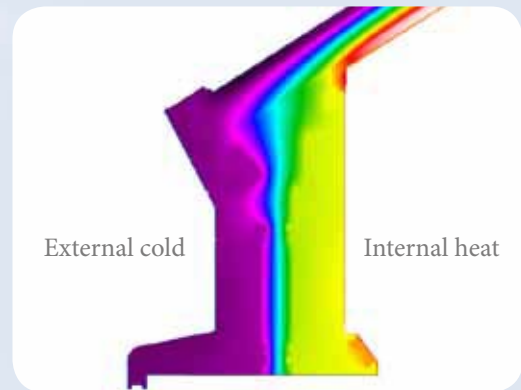


Natural choice for natural light

What does thermally broken mean?

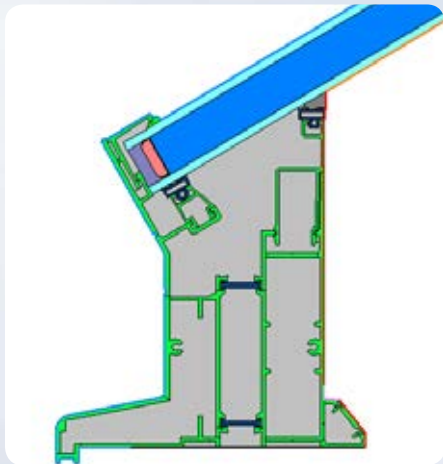
Our system is one of the most thermally efficient systems available on the market.

Both internal and external components are completely isolated from each other by means of either polyamide strip, thermal barriers, insulation and isolators, so there are no cold bridges, thus reducing temperature transfer to a bare minimum.



Eaves Beam

Please make sure you notice these features when comparing us to other 'so called' thermally broken roof systems that are available on the market.



Eaves Beam

Another key feature bespoke to our system is that both the glass and glazing bar system does not project outside our eaves beam, i.e. reducing a cold bridge even further.



Eaves Beam

With lower thermal U values in mind our standard glazing material is 28mm double glazed units, with a centre pane U value of 1.2 W/m². This U value can be further reduced to an outstanding 0.7 W/m² by using 50mm triple glazed option (dependant on roof style).

Designing a roof to lower U values even further is achieved by maximizing glass area (maximum glass to aluminium ratio), i.e. the least amount of glazing bars possible.

Natural choice for natural light

Double Pitched Rooflight



35 metres by 2 metres at 40 degree pitch

Double Pitched rooflight







Howells Glazing Systems Ltd

Full Thermally Broken Roof Light System

This is a full aluminium thermally broken system to meet the ever increasing demands of both thermal efficiency low maintenance materials to combine both modern and traditional and authentic appearance of timber structures.

Materials are powder coated to a high quality finish and are available in any RAL or BS Colour of your choice. Different internal & external profile finishes are available (i.e ornate ogee, square or raked features) to suit your application.

System accommodates a multitude and different double glazed units thicknesses from 24mm – 35mm. Our D/G standard specification is 28mm thickness units Toughened Safety Glass – Low 'E' – Argon gas filled with a D/G U Value 1.2 W/m2.

D/G Units are available in Clear / Bronze / Green & Blue Tints ; Self cleaning finishes (Pilkington Active) and also Solar Controlled finishes such as Cool-Lite or Sun-cool just to name a few.



REF. 10298 - [627] - SHETAL PATEL - LONDON

Job as shown above

Style - Double Pitched - Single Gable-Ended

Internal kerb size :- 4000mm x 4000mm x 30 Deg Pitch - Powder Coated RAL 9910 Satin White

Full Thermally Broken Roof Light System



REF. 16181 - [1121] - CONQUEST HOMES LLP

DESIGN by :-

ANDY WINTERTON - CONQUEST HOMES
STAMFORD, LICS. TEL. 01780 444000
Email andy@conquesthomes.co.uk

Job as shown above

Style - Double Pitched

Internal kerb size :- 31,000mm x 1300mm x 35 Deg Pitch - Powder Coated - BS10B15 Cream

Full Thermally Broken Roof Light System



REF. 14495 - [1057] - ELITE - Site :- TORQUAY

Job as shown above

Style - Double Pitched Rooflight with Gable End Windows

Internal kerb size :- 6115mm x 1980mm x 30 Deg Pitch - Powder Coated - RAL 9010 Matt







Roof Vents



Roof vents are purpose made to your exact requirements and can accomodate glass thicknesses from 6mm to 50mm (28mm is our standard).

Powder Coated to any standard RAL colour of your choice.

Manual, 230 Volt or 24 Volt electrical operation options available.



100T Digital control panel with rain sensor and thermostat



Electrical chain motor



Manual worm gear



On/Off Retractive switch



Natural choice for natural light

Glass Options



There's an abundance of different glass specifications to choose from.

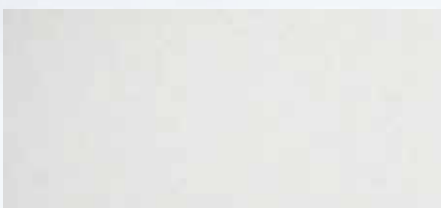
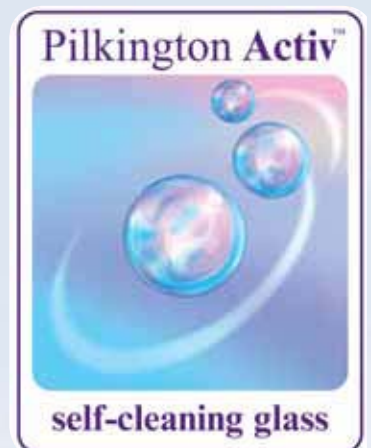
Our preferred supplier is Pilkington Glass as they are an established company and household name.

Our standard specification for glass is 28mm Clear toughened double glazed units (with a centre pane U value of 1.2 W/m).

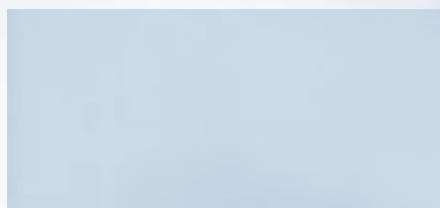
However, we do offer a 50mm triple-glazed unit option (with a centre pane U value of 0.7 w/m²)

Glass upgrades such as Activ Self Cleaning and also Activ Blue or Neutral (Grey) Solar controlled options are available just to name a few.

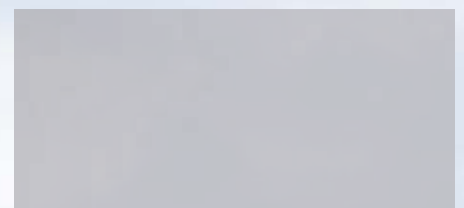
Glass samples and more technical information available on request.



Clear Activ



Solar Blue Activ

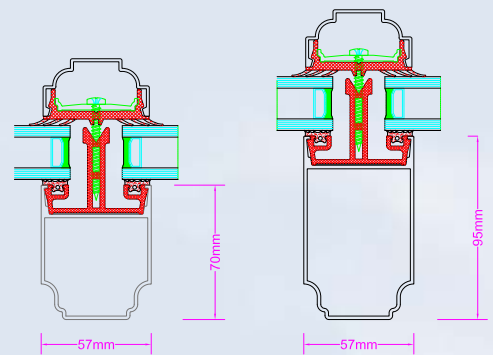
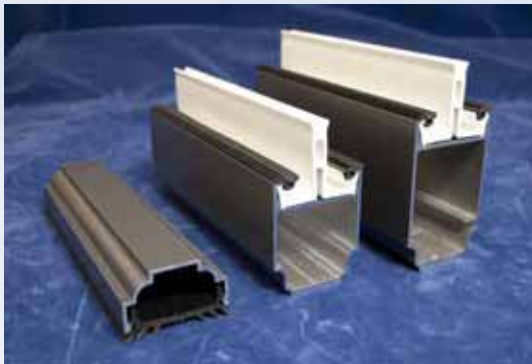


Solar Neutral Grey Activ

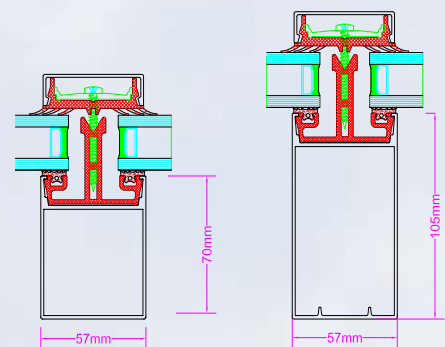
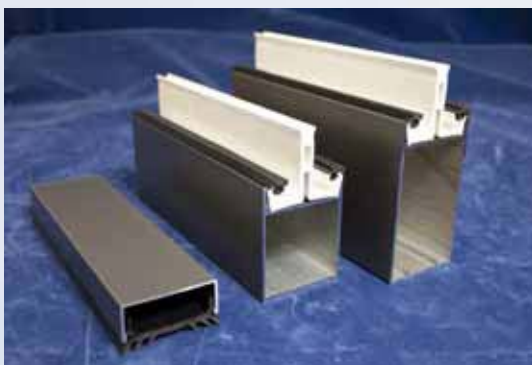
Natural choice for natural light

Profile choices

Ornate Profile



Square Profile



Samples available upon request

