



ultraframe

Transforming light and space

CONSERVATORIES

---



Choosing the style of your CONSERVATORY is an important decision and one that you need to consider carefully...

Not only do you need to think about the style that will best complement your home, but also the style that will match your lifestyle and be suited to how you want to use your new space.

Conservatories now have a number of glass roof options which can help keep your conservatory cool in the summer and warm in the winter to give you all year round use.



## Style breakdown:



### GEORGIAN

Sometimes also known as an Edwardian.

A flat-fronted style that offers excellent use of floor space due to a square or rectangular internal shape.



### GABLE

A high roof slope and the same floor space as a Georgian. The front panel of the roof remains upright rather than sloping back to the centre as on a Georgian.



### VICTORIAN

Its distinguishing architectural feature, a bay front, with either an angled (3 bay) or slightly curved (5 bay) front, combined with a steeply pitched roof and ornate ridge.



### LEAN-TO

Ideal for properties with limited space under the eaves or an awkward area in which to fit a conservatory. A lean-to offers a variable pitch to suit your home.



### P or T SHAPE

The P & T shapes take their name from the plan view of each design. Ideal for larger conservatories, a P-shape can combine for example a lean-to and a Georgian. The styles are better suited to larger properties.

# CONSERVATORIES

The Classic roof is so configurable that your preferred retailer will be able to create a design to suit your home, whatever the architectural challenge.





A traditional conservatory could be the answer you are looking for, depending on the architectural style and period of your home.

A traditional conservatory in aluminium or PVC is within reach and can create a stunning space for your home.



Georgian conservatory



Gable conservatory







Your conservatory can open up your home into the garden through the use of bi-folding or large in-line sliding doors which gives a whole new modern edge to the conservatory

Combined with differing elements like full height glazing for the ultimate modern look.



Lean-to conservatory with french doors



Lean-to conservatory with bi-folding doors







Conservatory colour - Black

## Live life in COLOUR

You are already on the way to making a life changing decision by choosing a conservatory and why not consider colour?

Do you stick to conventional colours/finishes or do you choose something different? Carefully chosen colours creates a space that works best for you and your home.

The foil laminated colours used on major items in the roof and on the PVC side frames, have a real woodgrain texture to add a further dose of character. The products can be coloured or woodgrain foiled to one side or both sides with the possibility to mix colours between the outside and the inside.

Please ask about our standard and bespoke colour options.



**White**  
Paint matching:  
RAL9003



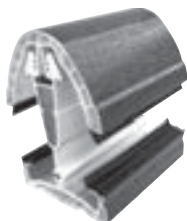
**Cream**  
Paint matching:  
RAL9001



**Ebony Black**  
Paint matching:  
RAL8022



**Sage Green**  
Paint matching:  
BS14C35



**Grey**  
Paint matching:  
RAL7016



**Rosewood**



**Light Oak**



**Irish Oak**

A coloured conservatory consists of foiled and painted parts along with base colour extrusions. Every effort is made to ensure gloss levels are within reasonable tolerance. RAL and BS colour references are made in good faith. The colours above are reproduced as accurately as printing will allow, if in doubt always request an actual physical sample/foil swatch. White gutter on white foiled roofs and black gutter is standard on all colour/finishes except Rosewood and Light Oak, where base extrusion colours are used.





Your standard conservatory can be given an 'orangery' feel with the Livinroom pelmet internally.

The LivinRoom pelmet comes in depths from 800mm to 1200mm which insulates the perimeter of your ceiling whilst giving you an orangery look at a value price point.

Why not;

- Enjoy the light from a conservatory with the feel of an extension - providing greater overall value for money and the best of all worlds.
- Live more comfortably with improved thermal efficiency when compared to a standard conservatory (additional insulation can be added by your retailer for enhanced comfort to reduce heat loss).
- Experience a real room/living room with more styling and furnishing options, the perimeter ceiling is perfect for down lighters, spotlights or speakers.



Curved Cornice



Flat Cornice 2 high  
(Available from September 2016)



Flat Cornice 3 high

Why not embellish your conservatory with the unique Cornice - flat or curved - for a smoother finish and to hide the standard gutters!







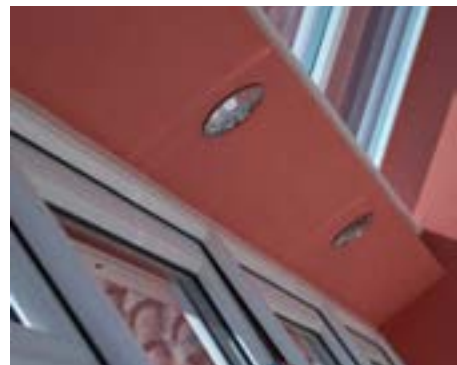
LivinLight from  
 Ultraframe gives  
 you the option to  
 choose the style  
 of light that can  
 be fitted in your  
 conservatory.

LivinLight adds an insulated electrical  
 housing system to the centre ridge  
 under-cladding of a glazed roof (or  
 where the roof meets the house wall  
 on a Lean-to style conservatory).  
 This wider platform enables you to  
 install a wider selection of lighting  
 than most conservatories offer and  
 gives a more 'roomlike' feel.



Our LivinLight option insulates  
 the ridge area of your conservatory  
 to keep you warmer in winter and  
 you also get to choose from the  
 widest range of lights on the market.  
 This option also allows you to paint  
 the ridge and pelmet to match or  
 co-ordinate with your decor to  
 give your conservatory that  
 individual look.

This project also features  
 LivinRoom, the plastered  
 perimeter pelmet system  
 - see p11







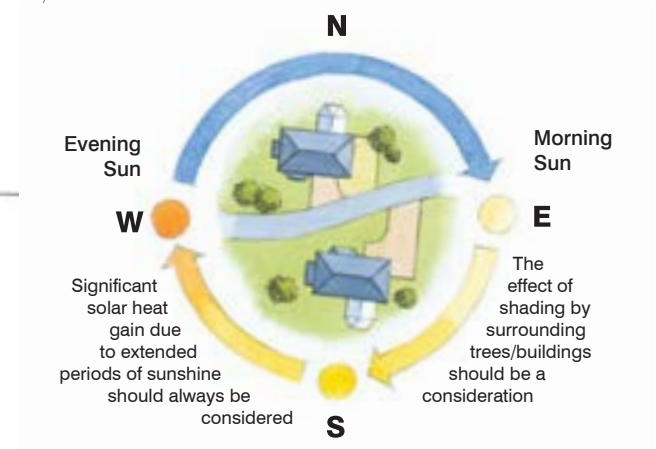
# THE IMPORTANCE OF SMALL DETAILS

There are a variety of options to customise the exterior and interior of your new space. Here we explore just some of the ways you can add your own, unique finishing touches to the final design.

## CLIMATE CONTROL

You need to consider ventilation when planning your conservatory with your retailer as it is vital to a comfortable living environment. This is often overlooked by some manufacturers but Ultraframe's roofing system take care of this.

The type of ventilation you need is specific to each conservatory, based on many considerations such as size, shape and most importantly, aspect in relation to the sun. South facing conservatories need to take into account the direct sunlight they receive in summer, whilst north-facing sites need to consider heating options for the colder months of the year. Other factors to consider include overshadowing of the conservatory from obstacles such as trees and buildings and the severity of wind and snow in your area.



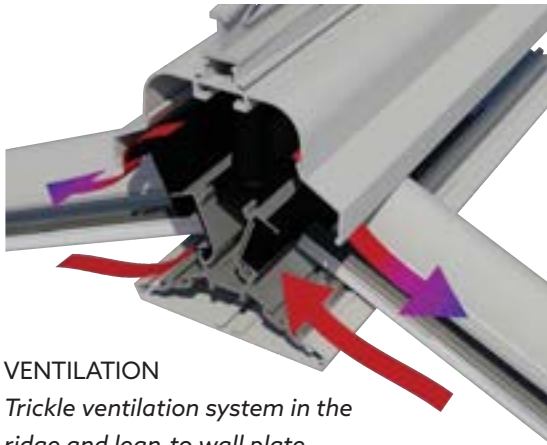
If all this sounds complicated, let us help you select the best ventilation options for your conservatory.

Ventilation is key within the structure of conservatory roofs, so you can be assured that by choosing a conservatory with an Ultraframe roof you're protecting your conservatory from the elements, the potential for problems and protecting your investment.

By specifying a conservatory with an Ultraframe roof, you will be able to benefit from these ventilation features - see across right (minimisation of condensation, for example) and enjoy your conservatory more of the year and your conservatory will have a long, trouble-free and low maintenance lifespan.

\*Not all options are available with all systems/designs. Your Ultraframe retailer will advise accordingly.





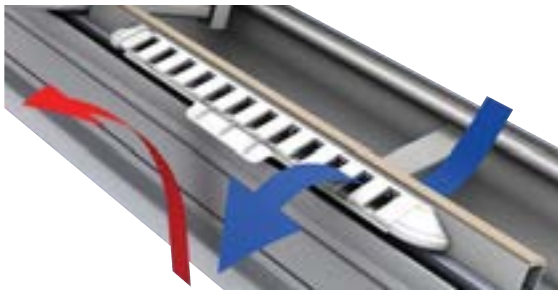
## VENTILATION

### *Trickle ventilation system in the ridge and lean-to wall plate*

As warm air rises, Ultraframe have developed a ventilation system to allow this air to escape via the roof, minimising the possibility for condensation to form.

### *Eavesflow (optional)*

A trim that fits between the wall sideframe and roof, with built in ventilation and a slider on/off control button.



## OPENING ROOF VENTS

Better than a window, a roof vent is a fast and effective way of allowing warm air to leave your conservatory. Ultraframe roof vents are supplied with either manual or electric openers. If you opt for electric openers then thermostats and rain sensors will allow for automatic opening and closing.



Rain sensor and thermostat.



Pole operated screw jack mechanism

## CONSERVAGLASS:

When designing a conservatory, choosing the right specification of roof glass is crucial to your enjoyment and comfort. To enable a conservatory to be used all year round, a glazing material must be selected that deflects heat from the sun in the Summer and retains the warmth from heating appliances in the Winter. Also needed is a material that allows maximum light into your home.

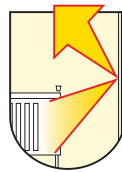
### KEEPS HEAT OUT IN SUMMER



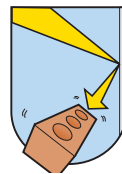
### TINTED



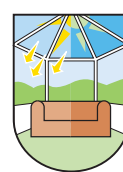
### RETAINS WARMTH IN WINTER



### TOUGHENED



### REDUCES FABRIC FADING



### TRUE SELF CLEANING



- Our sealed units offer a range of performance attributes - perfect for roofs
- All roof units are toughened safety glass: 4mm glass - 16 mm Argon filled cavity - 4 mm glass with black warm edge spacer as standard.
- All roof units are manufactured in specialist roof glass factories and are guaranteed for 10 years.
- All specifications are true 'self cleaning' and offer a range of solar control properties.

**CONSERVAGLASS™**  
by ultraframe

## POLYCARBONATE

Polycarbonate roof glazing is a lower cost alternative to glass but still provides excellent thermal properties and aesthetics.



Polycarbonate is available in a range of colours, thicknesses and specifications:

- Clear • Bronze
- Opal • Bronze/opal
- Solar control

“

You will be  
so proud  
of your  
new home  
conservatory  
and  
extension!

”

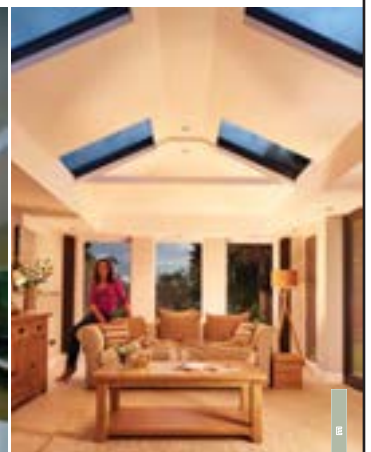
Our product range

**CONSERVATORIES**

**ORANGERIES**

**REPLACEMENT ROOFS**

**EXTENSIONS**



**ultraframe**

Transforming light and space