

Flat glass skylight

Thermally broken system



Low profile

Stylish appearance

Thermally broken for outstanding performance

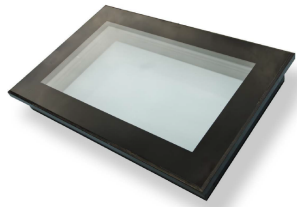
Bespoke options & sizes available

Attractive black ceramic border to glass

Factory glazed & sealed to eliminate leaks

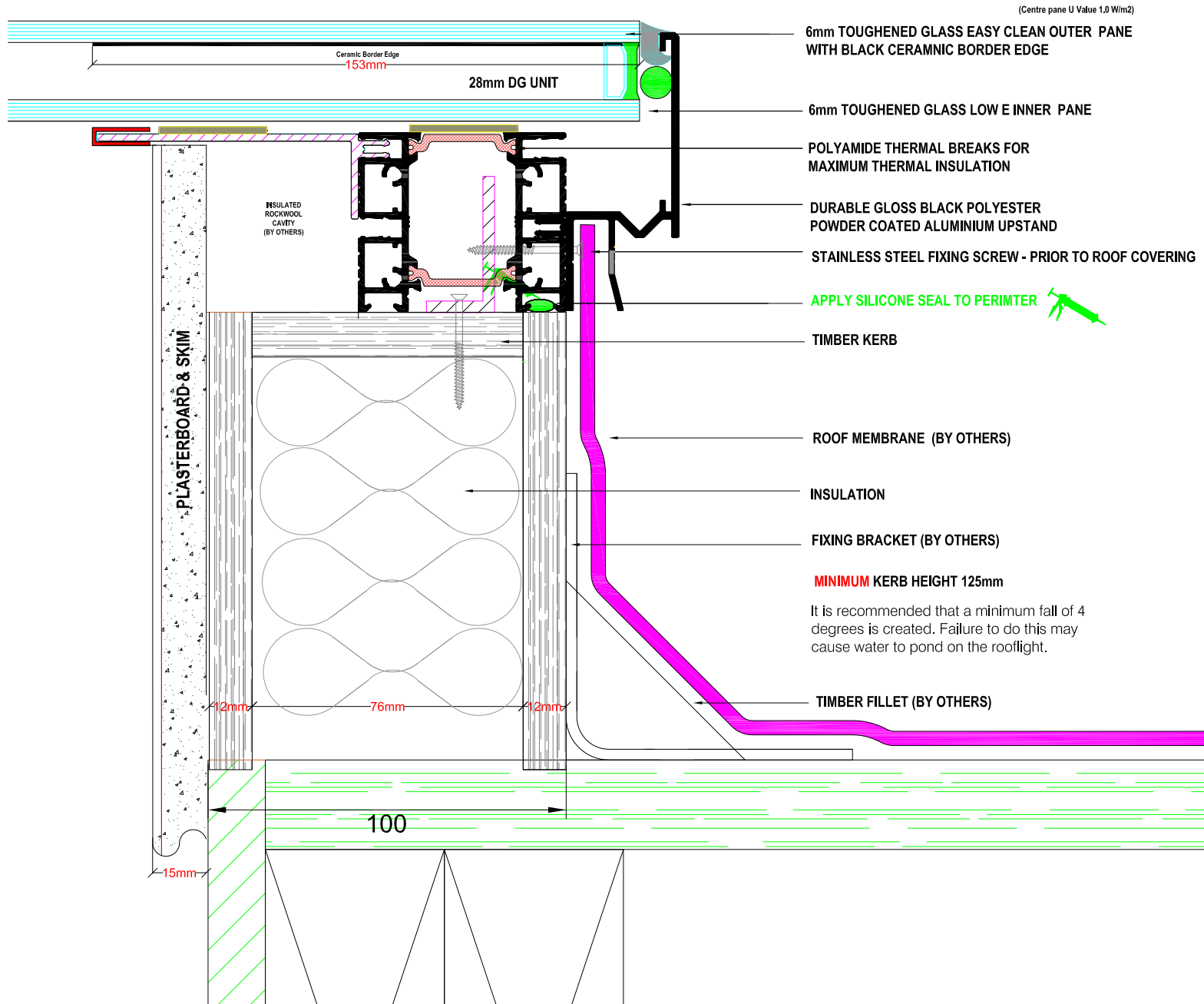
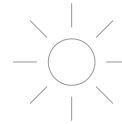
Simple to install

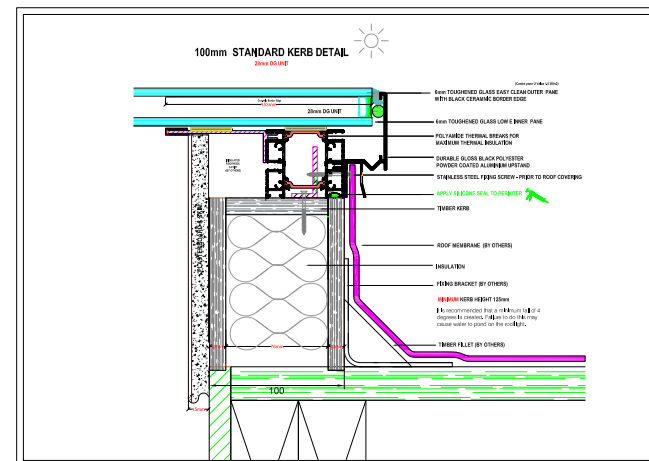
Can be fitted on flat or pitched roofs



100mm STANDARD KERB DETAIL

28mm DG UNIT



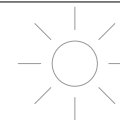


	TITLE		
	DOUBLE GLAZED DETAIL		

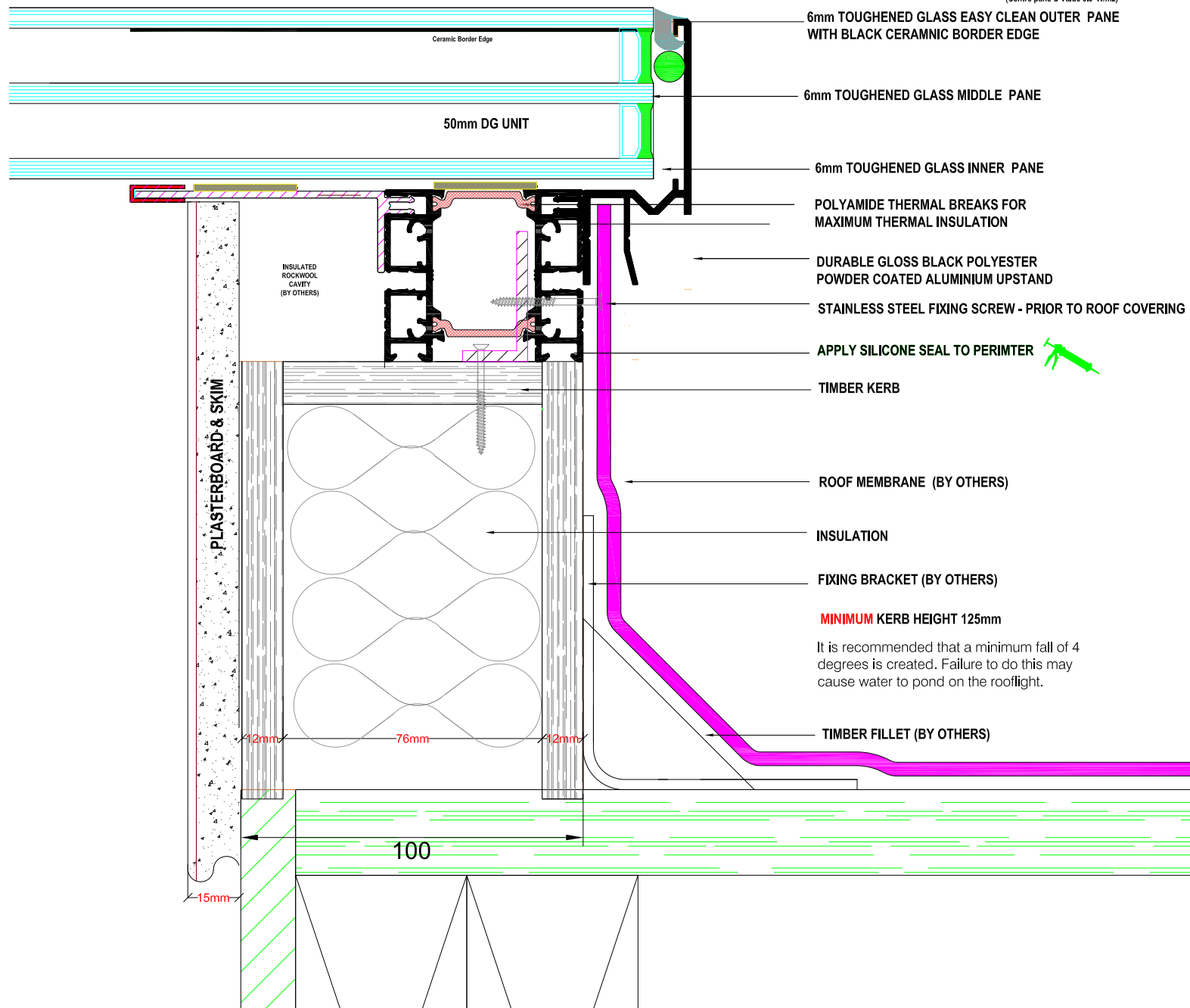


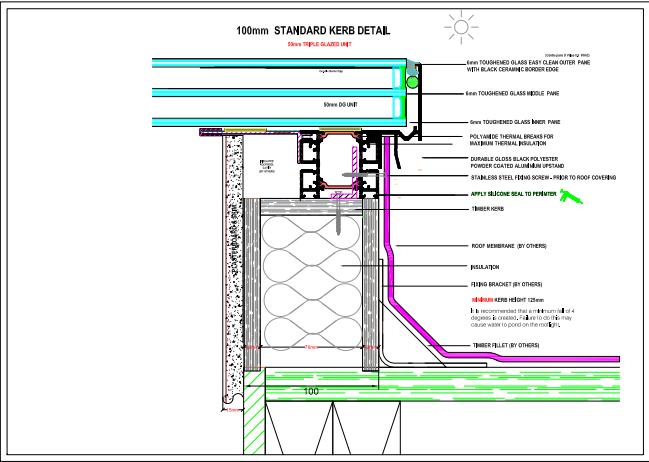
100mm STANDARD KERB DETAIL

50mm TRIPLE GLAZED UNIT



(Centre pane U Value 0.6 W/m²)

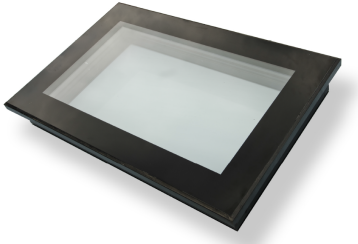




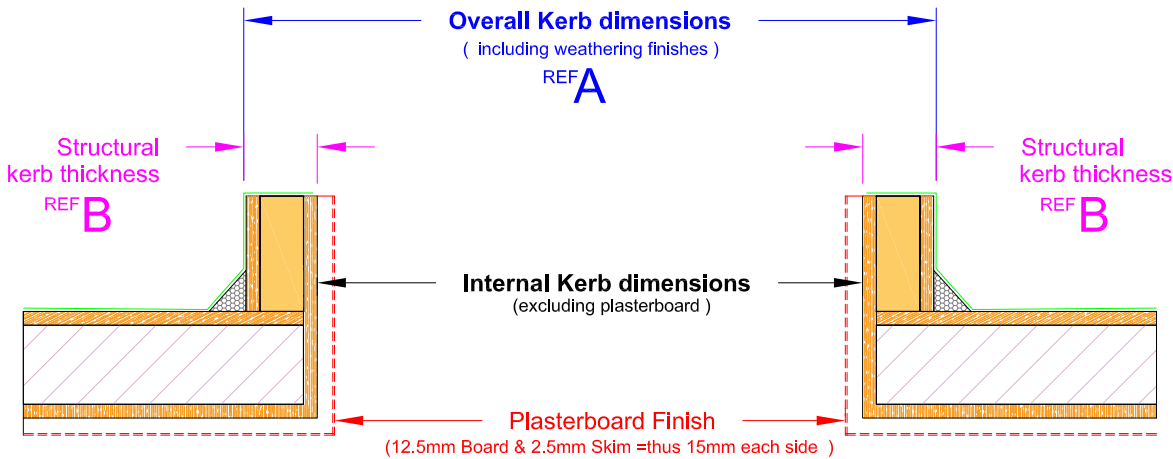
	TITLE		
	TRIPLE GLAZED DETAIL		

MANUFACTURING DIMENSIONS

BUILDERS KERB

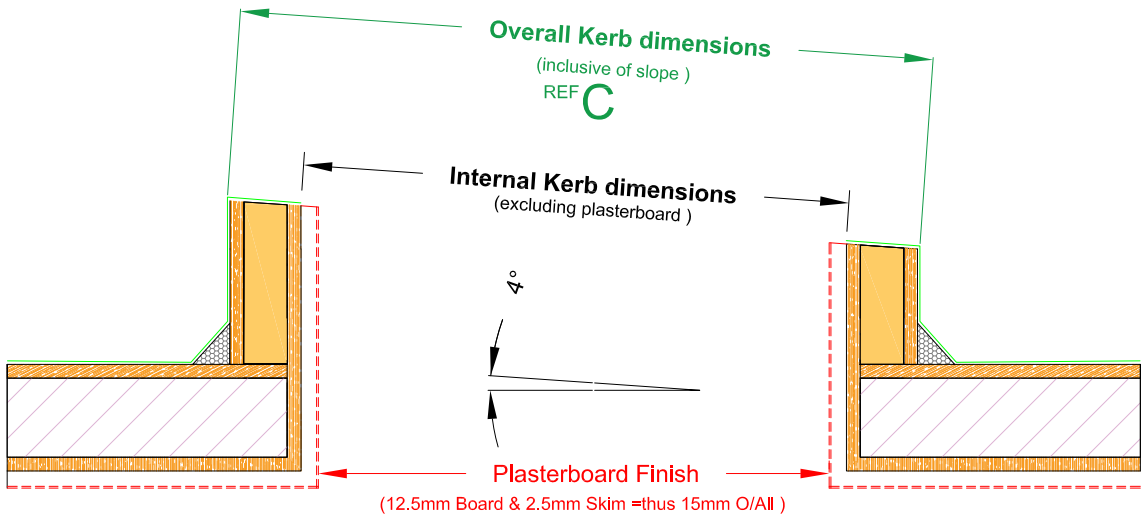


WIDTH



SLOPE

4 DEGREE PITCH
RECOMMENDED



REF

A	Overall Width kerb size =	<input type="text"/>
B	Structural kerb size =	<input type="text"/>
C	Overall Sloping kerb size =	<input type="text"/>

Flush Glaze Fixed Glass Roof light

Flush glaze fixed double glazed glass roof lights offer a flat glass construction which allows the largest possible amount of light to be brought into a room.

Key Features:

Low Profile

Stylish appearance and excellent thermal properties

Frame is Factory Glazed

Simple to install

Thermally broken to eliminate cold bridging

Can be installed either on a builders kerb on flat roof at 4° up to a slope of 15° (4° is recommended)

Or within a sloped tiled/slatted roof (4° up to a slope of 45°)

28mm double glazed unit. Centre Pane U Value of 1.1 W/m²

6mm Clear Toughened with Black Ceramic Black Border Edge

16mm Black Warm Edge Spacer – Argon Filled Cavity – Silicone Sealed

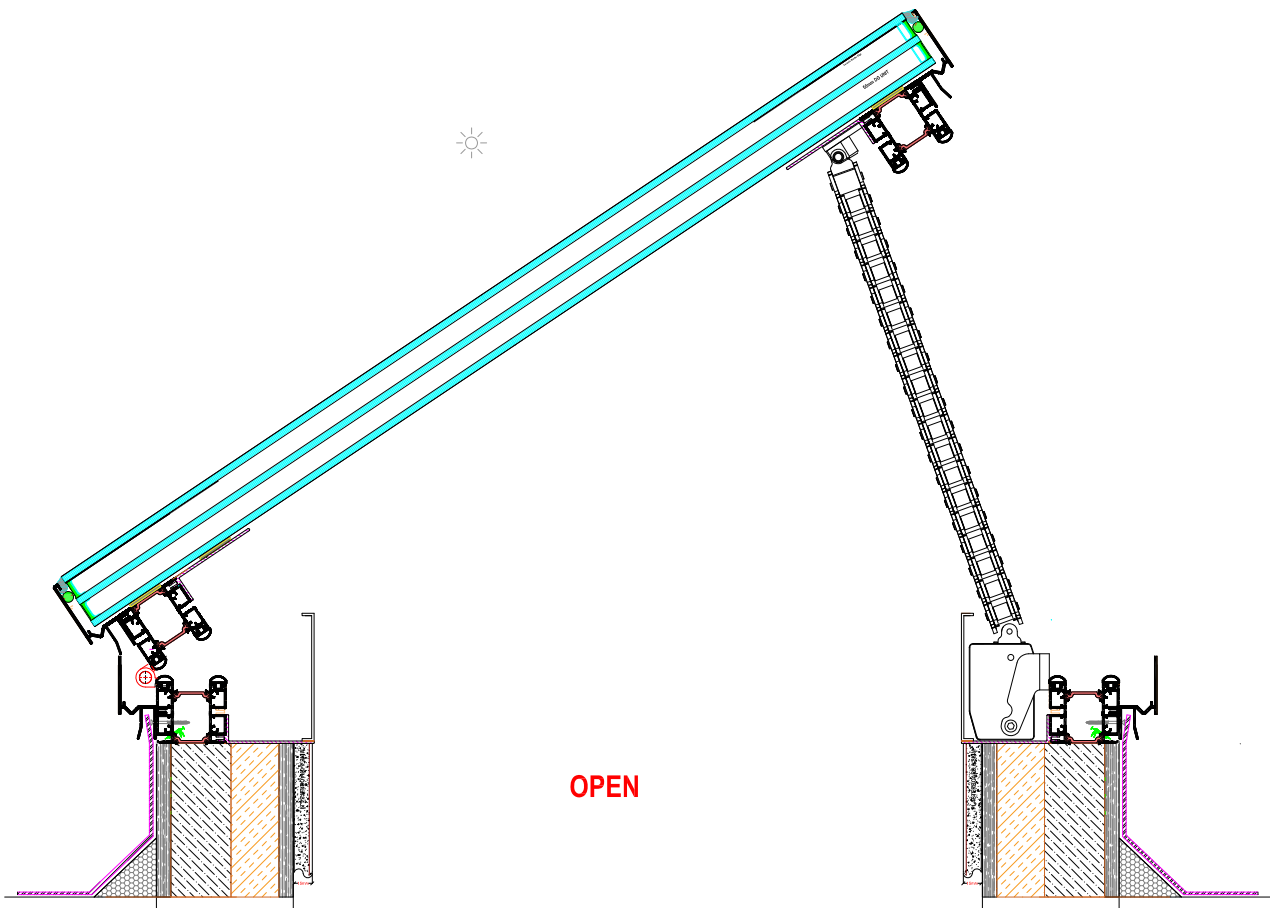
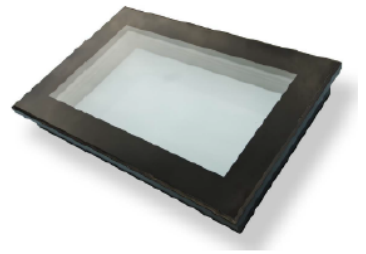
6mm Toughened Low E Inner Insulated Pane

Triple Glaze option and Walk-On available

Manual / Electric Openers also available

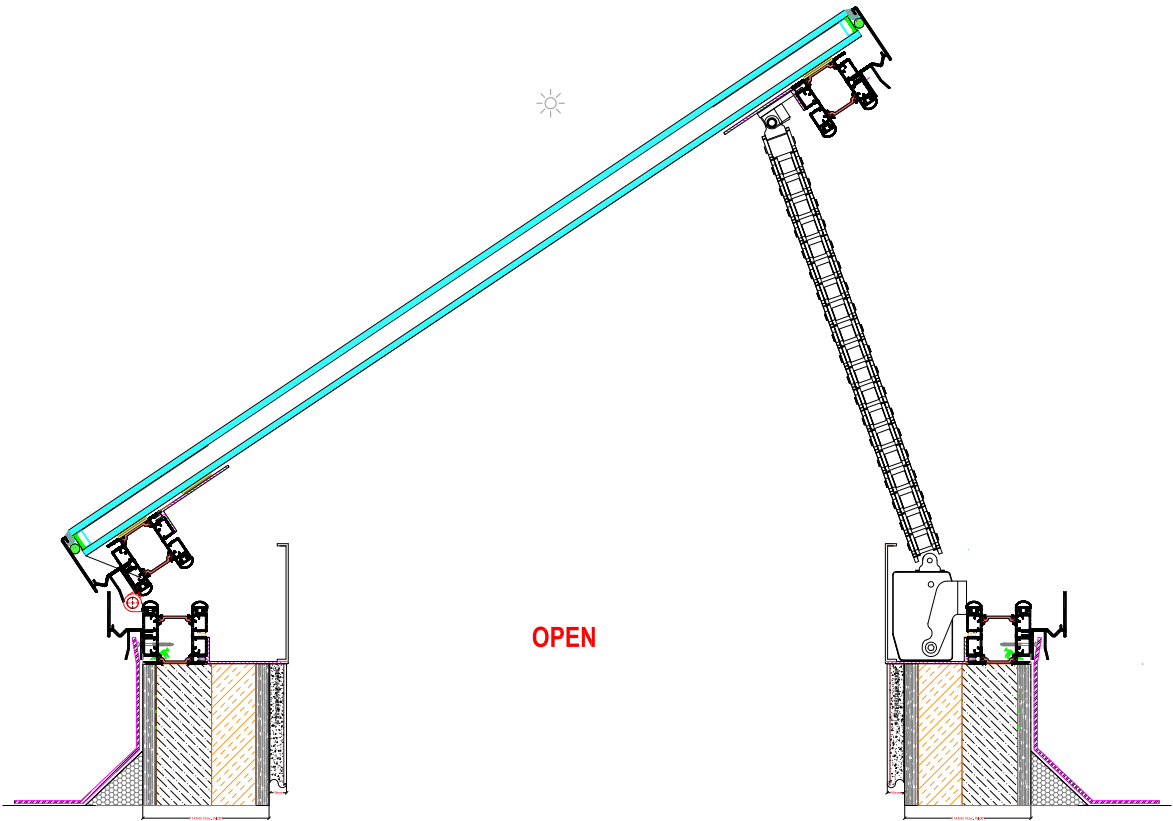
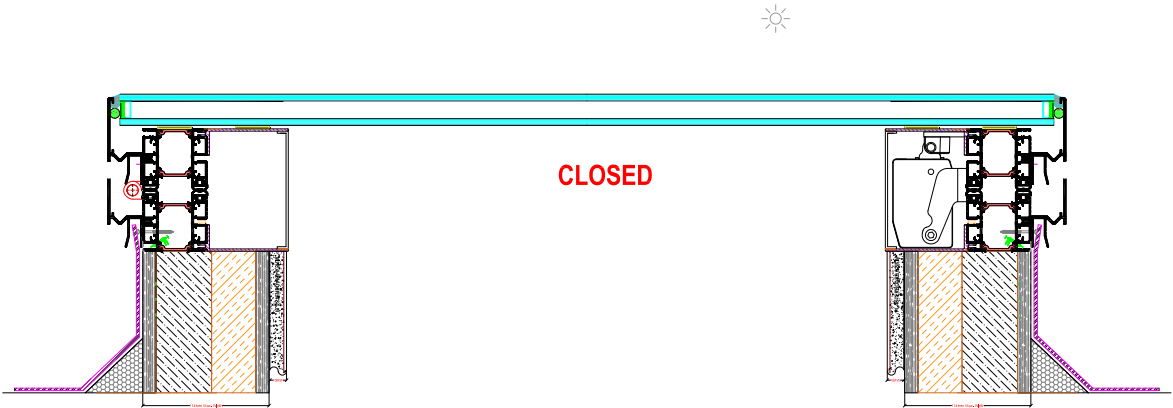
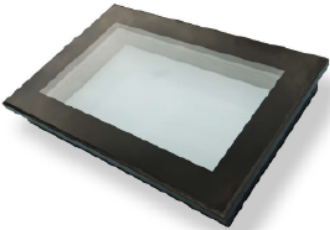
ELECTRICAL OPENER DETAIL

28mm DG Unit

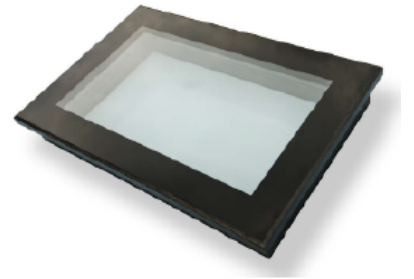


ELECTRICAL OPENER DETAIL

28mm DG Unit

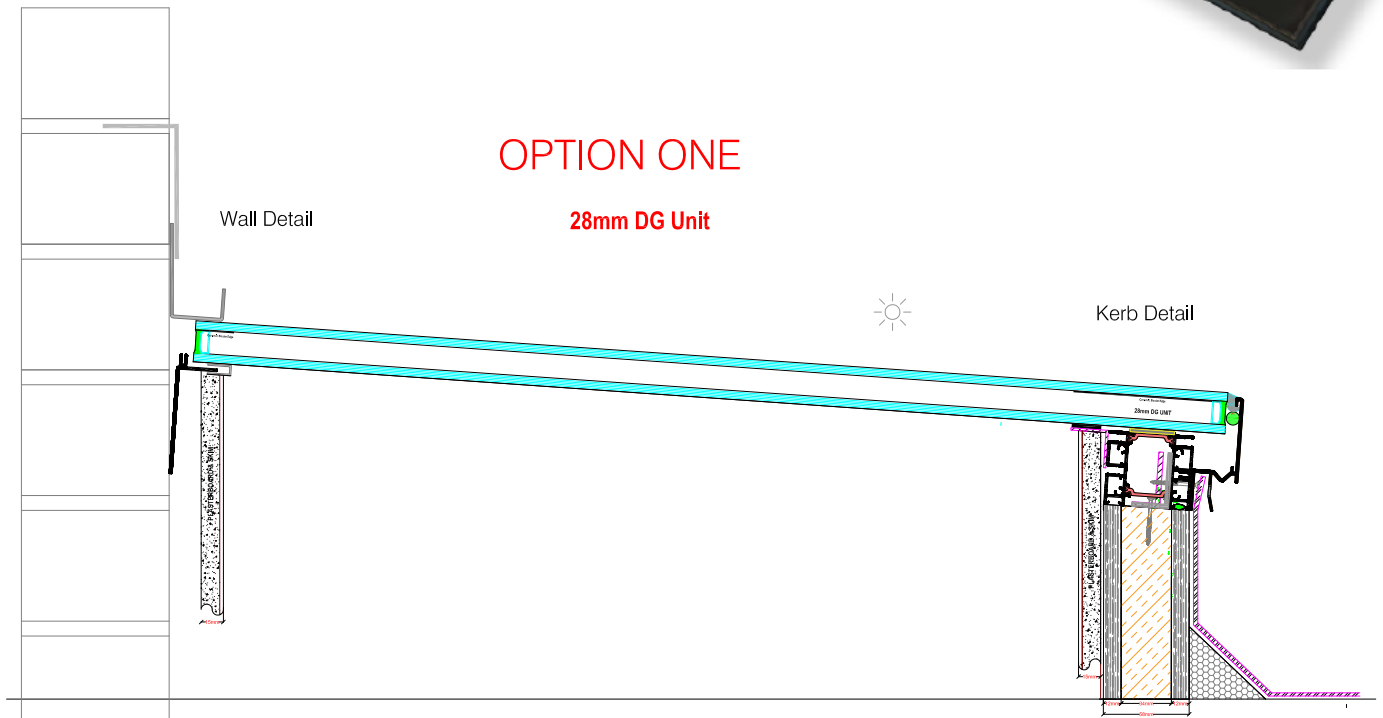


AGAINST WALL DETAIL



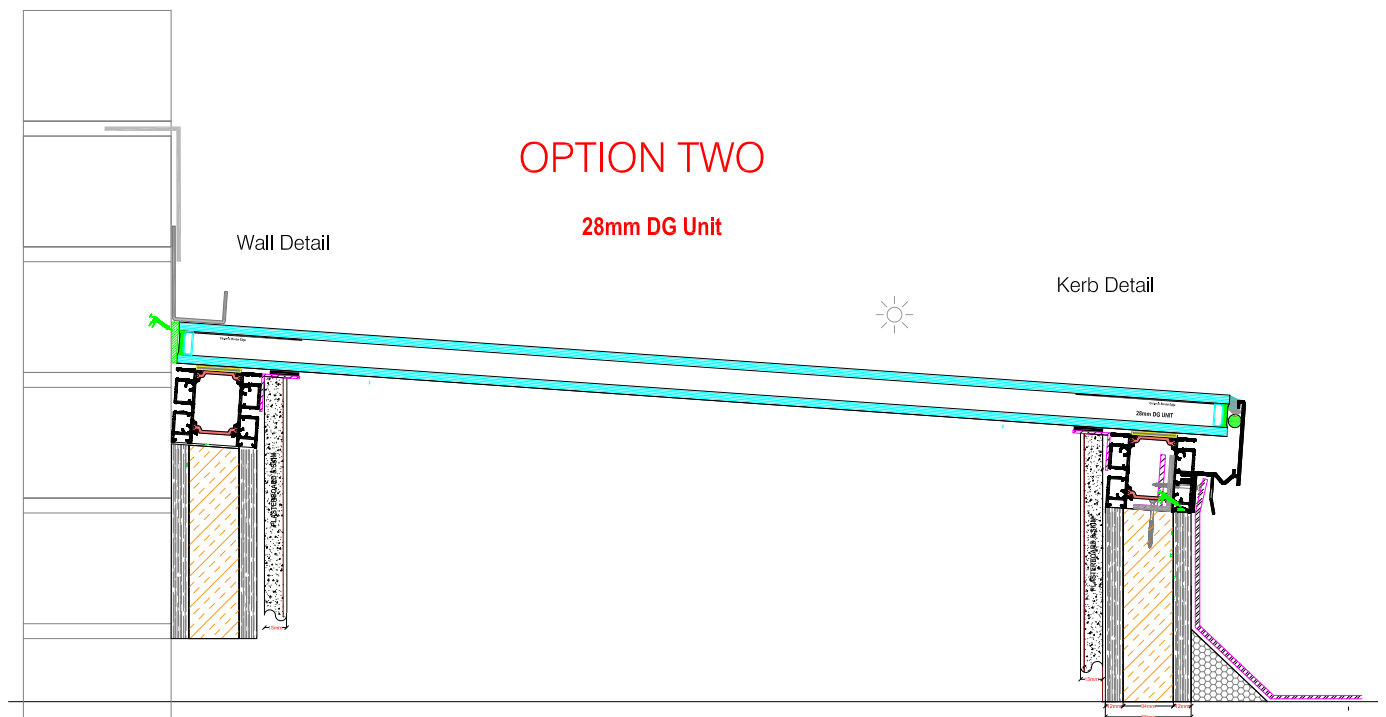
OPTION ONE

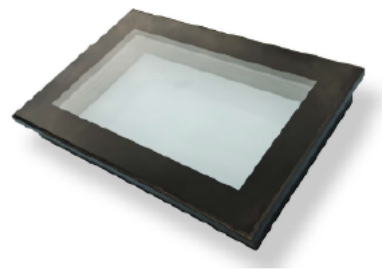
28mm DG Unit



OPTION TWO

28mm DG Unit





AGAINST WALL DETAIL

OPTION ONE 50mm Triple Glazed Unit



OPTION TWO 50mm Triple Glazed Unit

