

Thermally Broken Mono Pitch Roof System

Specialists in thermally broken roofs



Specialists in thermally broken roofs



This is a **full aluminium thermally broken system** to meet the ever increasing demands of both thermal efficiency low maintenance materials to combine both modern and traditional and authentic appearance of timber structures.

Materials are **powder coated** to a high quality finish and are available in any RAL or BS Colour of your choice.

Different internal & external profile finishes are available (i.e ornate ogee, square or raked features) to suit your application.

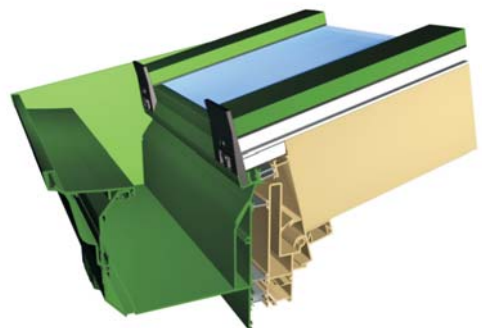
System accommodates a multitude and different double glazed units thicknesses from 24mm–35mm.

Our D/G **standard specification** is 28mm thickness units (4mmx20mmx4mm) Toughened Safety Glass

– Low 'E' – Argon gas filled with a D/G U Value 1.2 W/m2.

D/G Units are available in Clear / Bronze / Green & Blue Tints ; Self cleaning finishes (i.e Pilkington Active) and also Heat reflective/solar controlled finishes.

We manufacture bespoke and standard style roofs.



Natural choice for natural light

Mono Pitched Rooflights



Mono-pitched rooflight 6 metres long at 35 degree pitch

Natural choice for natural light



Our mono-pitched rooflights are fully thermally broken to meet ever increasing demands of both thermal efficiency and low maintenance.

Available in single or dual colour powder coated finishes combining modern styling and the appearance of traditional timber structures.

Available in pitches ranging from 5 to 45 degrees to accommodate up to 50mm triple glazed units (28mm double glazed is our standard specification).



Mono-pitched rooflight with manual vent



Mono-pitched rooflight with electrical vents

Natural choice for natural light

Double Pitched Rooflight



35 metres by 2 metres at 40 degree pitch

Double Pitched rooflight

Natural choice for natural light

Roof Vents



Roof vents are purpose made to your exact requirements and can accomodate glass thicknesses from 6mm to 50mm (28mm is our standard).

Powder Coated to any standard RAL colour of your choice.

Manual, 230 Volt or 24 Volt electrical operation options available.



100T Digital control panel with rain sensor and thermostat



Electrical chain motor



Manual worm gear

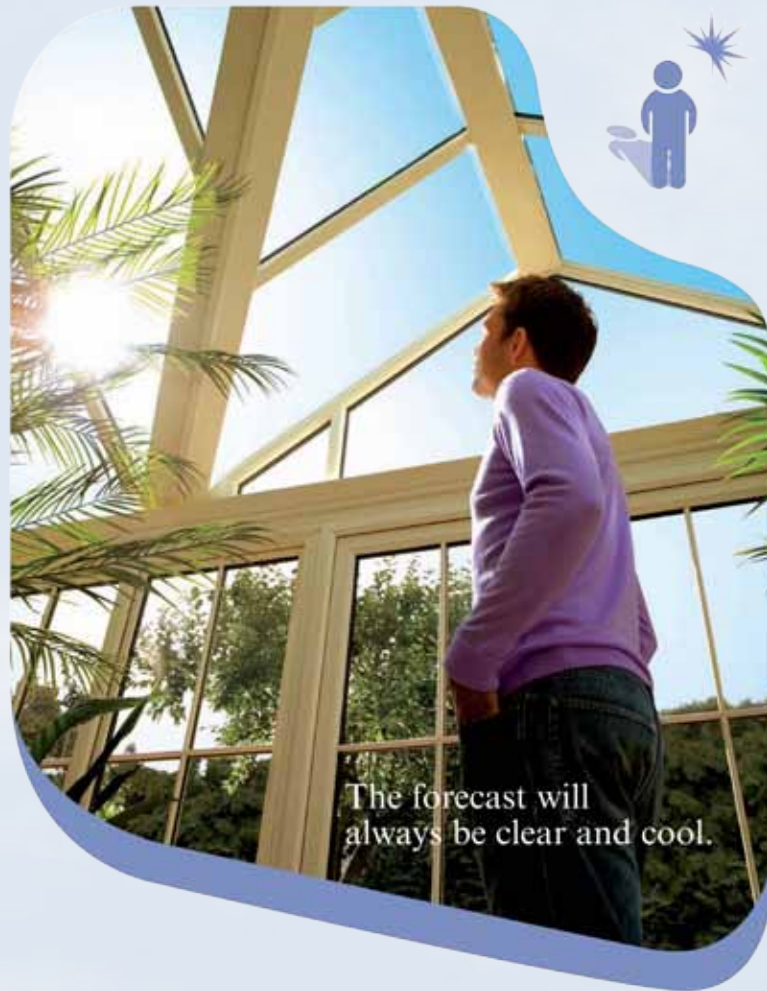


On/Off Retractive switch



Natural choice for natural light

Glass Options



There's an abundance of different glass specifications to choose from.

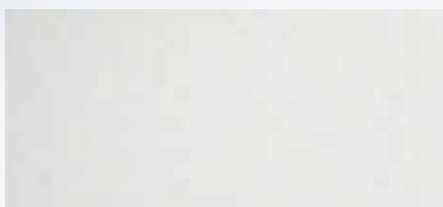
Our preferred supplier is Pilkington Glass as they are an established company and household name.

Our standard specification for glass is 28mm Clear toughened double glazed units (with a centre pane U value of 1.2 W/m).

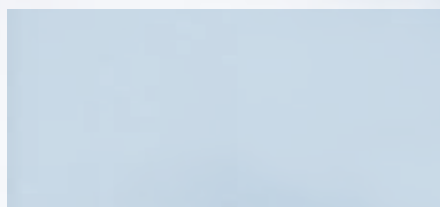
However, we do offer a 50mm triple-glazed unit option (with a centre pane U value of 0.7 w/m²)

Glass upgrades such as Activ Self Cleaning and also Activ Blue or Neutral (Grey) Solar controlled options are available just to name a few.

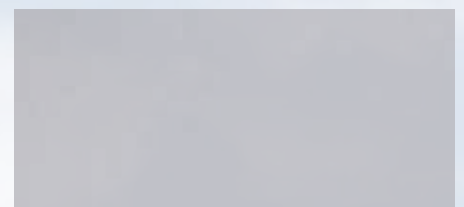
Glass samples and more technical information available on request.



Clear Activ



Solar Blue Activ

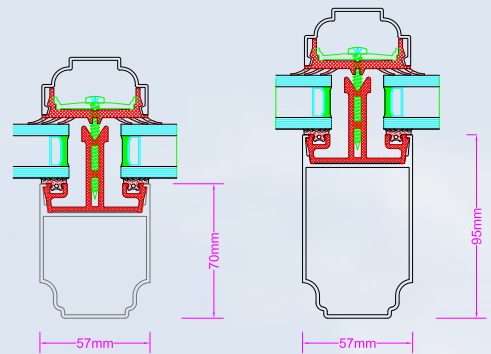
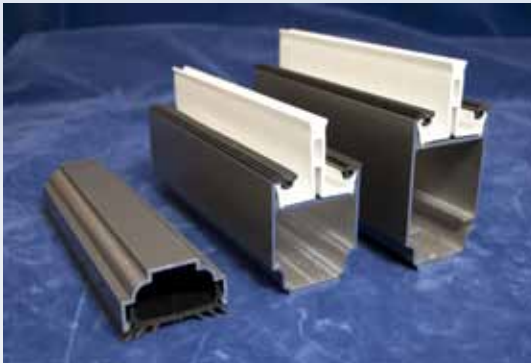


Solar Neutral Grey Activ

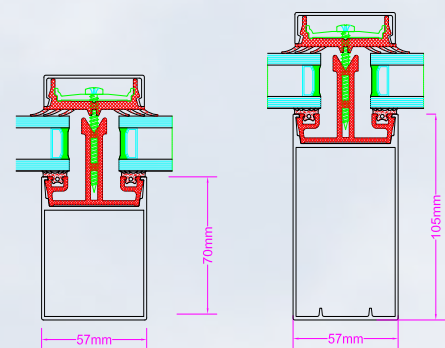
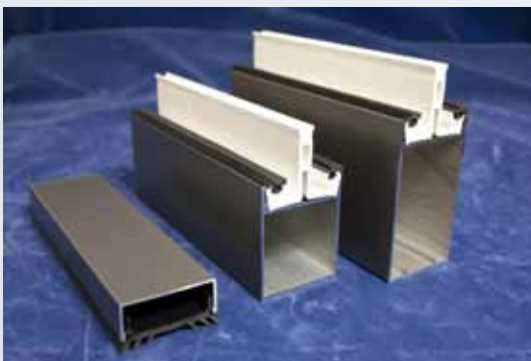
Natural choice for natural light

Profile choices

Ornate Profile

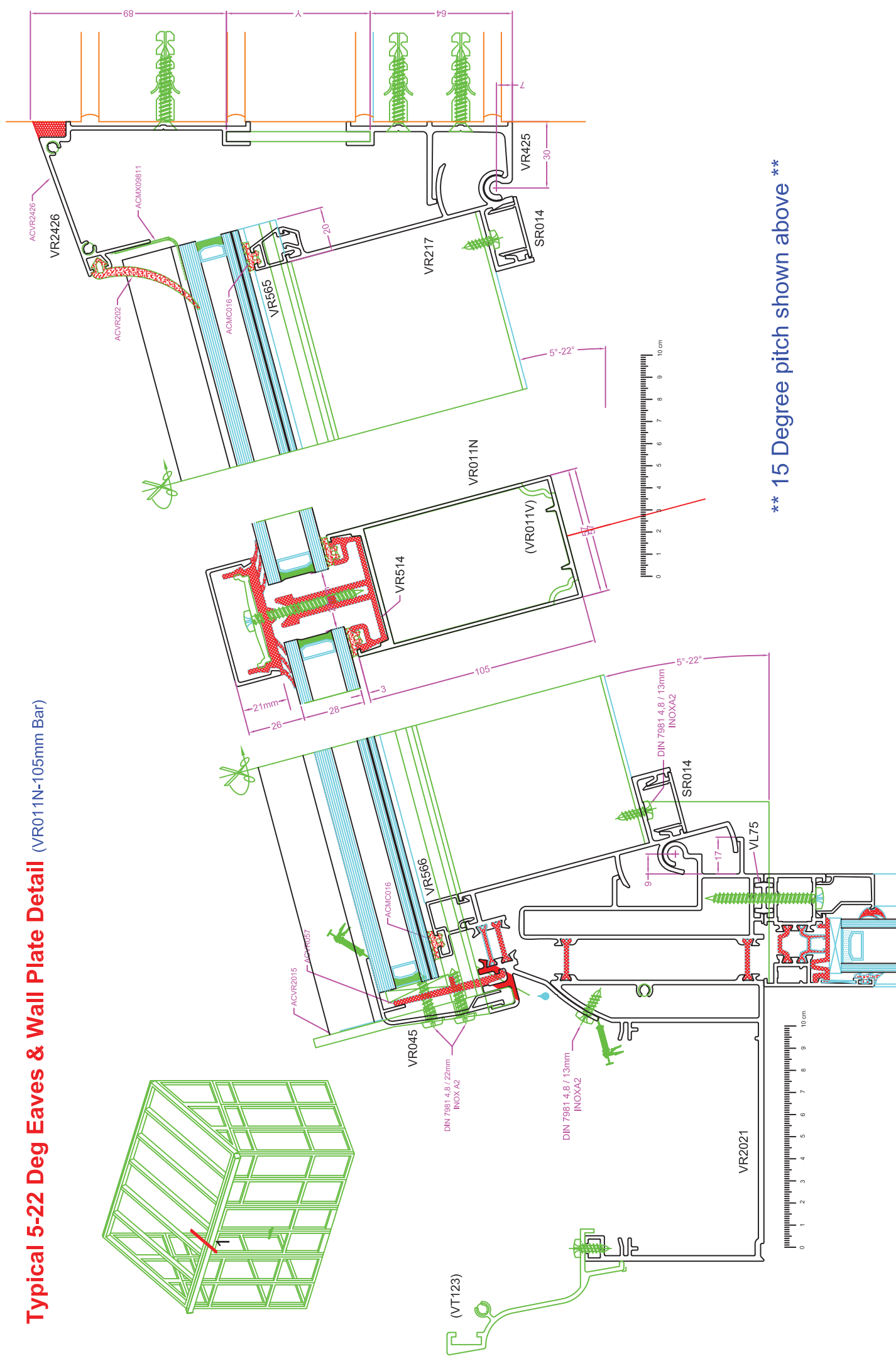


Square Profile

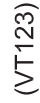


Samples available upon request

Typical 5-22 Deg Eaves & Wall Plate Detail (VR011N-105mm Bar)

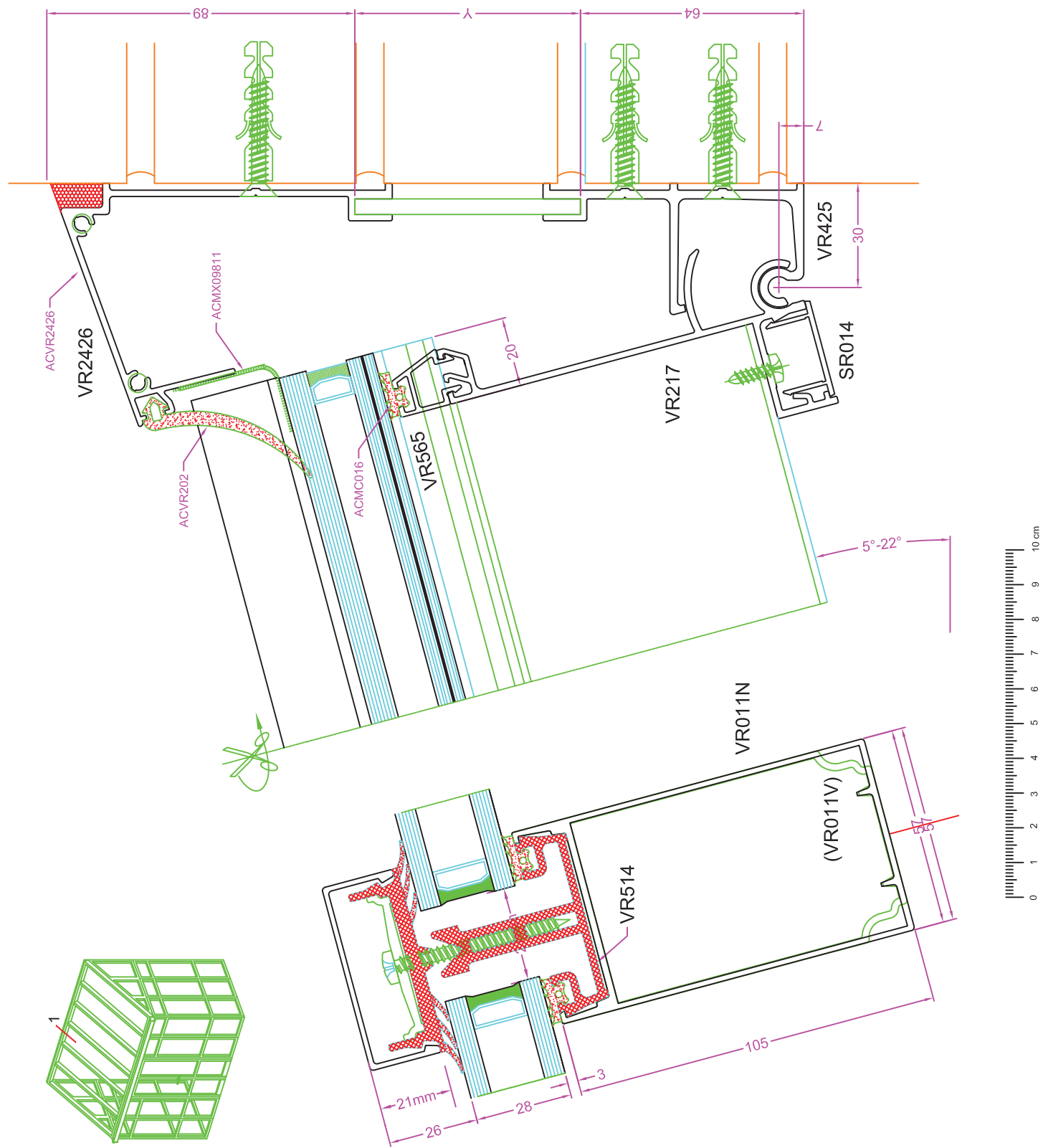


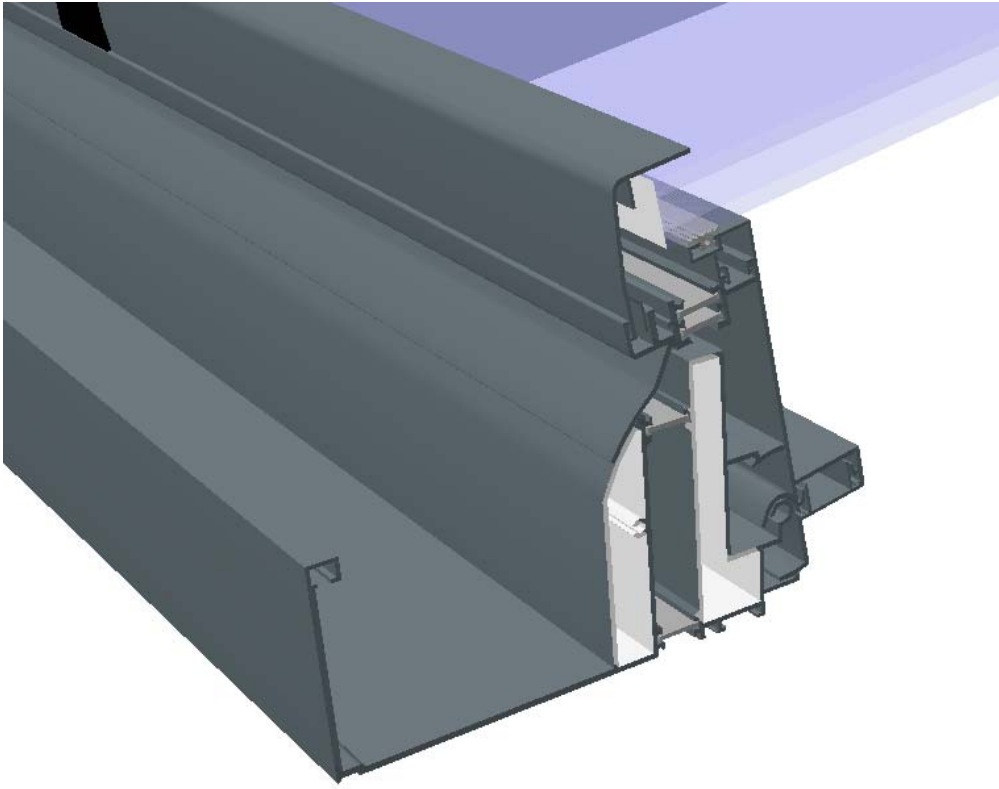
**** 15 Degree pitch shown above ****



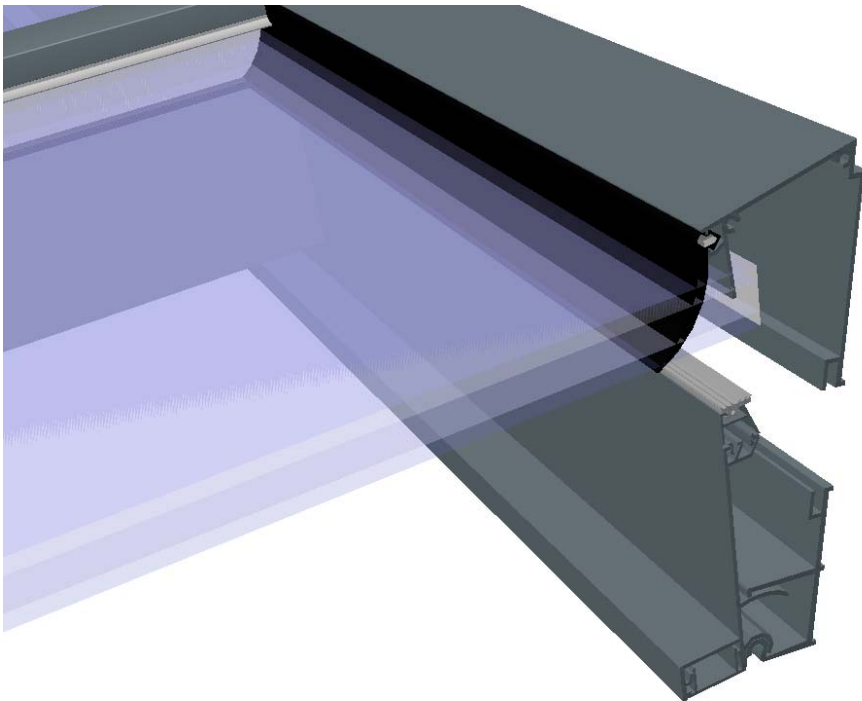
(VT123)

Typical 5-22 Deg Eaves Detail (105mm Bar)





EAVES DETAILS



WALL PLATE

Full Thermally Broken Roof Light System

This is a full aluminium thermally broken system to meet the ever increasing demands of both thermal efficiency low maintenance materials to combine both modern and traditional and authentic appearance of timber structures.

Materials are powder coated to a high quality finish and are available in any RAL or BS Colour of your choice. Different internal & external profile finishes are available (i.e ornate ogee, square or raked features) to suit your application.

System accommodates a multitude and different double glazed units thicknesses from 24mm – 35mm. Our D/G standard specification is 28mm thickness units (4mmx20mmx4mm) Toughened Safety Glass – Low 'E' – Argon gas filled with a D/G U Value 1.2 W/m2.

D/G Units are available in Clear / Bronze / Green & Blue Tints ; Self cleaning finishes (Pilkington Active) and also Heat reflective finishes such as Cool-Lite or Sun-cool just to name a few.



REF. 11098- [696] - Firway Building Contractors]

Contact - Surrey - 01428 717322

Job as shown above

Style - Mono Pitch Roof with Vertical Windows

Internal kerb size :- 1295mm Projection x 4025mm Width x 20 Deg Pitch - Powder Coated RAL 1015 Matt Cream

Accessories :- 415mm Vertical Windows + 150mm Cill + 02 No. Electrical Roof Vents

Full Thermally Broken Roof Light System

This is a full aluminium thermally broken system to meet the ever increasing demands of both thermal efficiency low maintenance materials to combine both modern and traditional and authentic appearance of timber structures.

Materials are powder coated to a high quality finish and are available in any RAL or BS Colour of your choice. Different internal & external profile finishes are available (i.e ornate ogee, square or raked features) to suit your application.

System accommodates a multitude and different double glazed units thicknesses from 24mm – 35mm. Our D/G standard specification is 28mm thickness units Toughened Safety Glass – Low 'E' – Argon gas filled with a D/G U Value 1.2 W/m2.

D/G Units are available in Clear / Bronze / Green & Blue Tints ; Self cleaning finishes (Pilkington Active) and also Solar Controlled finishes such as Cool-Lite or Sun-cool just to name a few.



Job as shown above

Style - Mono Pitch

Internal kerb size :- 4738mm Width x 1548mm Projection- 20 Deg Pitch
Powder Coated Black RAL 9005 Matt

REF. 9815-[550]-ATLIN HOMES-CHESHIRE

Full Thermally Broken Roof Light System

This is a full aluminium thermally broken system to meet the ever increasing demands of both thermal efficiency low maintenance materials to combine both modern and traditional and authentic appearance of timber structures.

Materials are powder coated to a high quality finish and are available in any RAL or BS Colour of your choice. Different internal & external profile finishes are available (i.e ornate ogee, square or raked features) to suit your application.

System accommodates a multitude and different double glazed units thicknesses from 24mm – 35mm. Our D/G standard specification is 28mm thickness units (4mmx20mmx4mm) Toughened Safety Glass – Low 'E' – Argon gas filled with a D/G U Value 1.2 W/m2.

D/G Units are available in Clear / Bronze / Green & Blue Tints ; Self cleaning finishes (i.e Pilkington Active) and also Heat reflective/solar controlled finishes

We manufacture bespoke and standard style roofs. Roof pitches are available from 5 deg to 45 deg subject to the configuration.



REF. 9371- [495] Guy

Job as shown above

Style - Mono Pitched Roof

Size :- 6460mm Width x 1435mm Projection x 20 **Deg Pitch** - Powder Coated 9910 Satin White

Accessories :- Aluminium Thermally Broken Bi-fold Doors

MONO PITCHED ROOF SYSTEM



INSTALLED JAN 2010

Size :- 6260mm x 2010mm

Full thermally broken roof light system, powder coated to RAL 7021 Matt Grey. Glass with 28mm DG Units Low E, Argon Gas Filled Toughened Safety Glass. (DG U Value 1.2W/2m2)

Full Thermally Broken Roof Light System

This is a full aluminium thermally broken system to meet the ever increasing demands of both thermal efficiency low maintenance materials to combine both modern and traditional and authentic appearance of timber structures.

Materials are powder coated to a high quality finish and are available in any RAL or BS Colour of your choice. Different internal & external profile finishes are available (i.e ornate ogee, square or raked features) to suit your application.

System accommodates a multitude and different double glazed units thicknesses from 24mm – 35mm. Our D/G standard specification is 28mm thickness units (4mmx20mmx4mm) Toughened Safety Glass – Low 'E' – Argon gas filled with a D/G U Value 1.2 W/m2.

D/G Units are available in Clear / Bronze / Green & Blue Tints ; Self cleaning finishes (i.e Pilkington Active) and also Heat reflective/solar controlled finishes

We manufacture bespoke and standard style roofs. Roof pitches are available from 5 deg to 45 deg subject to the configuration.

All Prices are on application.



REF. 12927-[857] SKG GLAZING 344

Job as shown above

Style - Mono Pitched Roof

Size :- 3930mm Width x 2095mm Projection x 20 Deg Pitch - Powder Coated 9007 Metallic Silver
Accessories :- Aluminium Thermally Broken roof Vents & Bi-fold Doors

Full Thermally Broken Roof Light System

This is a full aluminium thermally broken system to meet the ever increasing demands of both thermal efficiency low maintenance materials to combine both modern and traditional and authentic appearance of timber structures.

Materials are powder coated to a high quality finish and are available in any RAL or BS Colour of your choice. Different internal & external profile finishes are available (i.e ornate ogee, square or raked features) to suit your application.

System accommodates a multitude and different double glazed units thicknesses from 24mm – 35mm. Our D/G standard specification is 28mm thickness units Toughened Safety Glass – Low 'E' – Argon gas filled with a D/G U Value 1.2 W/m2.

D/G Units are available in Clear / Bronze / Green & Blue Tints ; Self cleaning finishes (Pilkington Active) and also Solar Controlled finishes such as Cool-Lite or Sun-cool just to name a few.



Job as shown above

Style - Mono Pitch

Internal kerb size :- 3730mm Width x 1238mm Projection- 10 Deg Pitch
Powder Coated Black RAL 9005 Matt

REF. 12150 [784] GREENWAYS

Full Thermally Broken Roof Light System

This is a full aluminium thermally broken system to meet the ever increasing demands of both thermal efficiency low maintenance materials to combine both modern and traditional and authentic appearance of timber structures.

Materials are powder coated to a high quality finish and are available in any RAL or BS Colour of your choice. Different internal & external profile finishes are available (i.e ornate ogee, square or raked features) to suit your application.

System accommodates a multitude and different double glazed units thicknesses from 24mm – 35mm. Our D/G standard specification is 28mm thickness units (4mmx20mmx4mm) Toughened Safety Glass – Low 'E' – Argon gas filled with a D/G U Value 1.2 W/m2.

D/G Units are available in Clear / Bronze / Green & Blue Tints ; Self cleaning finishes (Clear Shield or Pro-Active) and also Heat reflective finishes such as Cool-Lite or Sun-cool just to name a few.



REF. 7222- [337] Williams

Job as shown above

Style - Mono Pitched Roof

Size :- 5500mm Width x 1850mm Projection x 40 Deg Pitch - Powder Coated 6021 Matt Green

Accessories :- Thermally Broken Windows & Door

Full Thermally Broken Roof Light System

This is a full aluminium thermally broken system to meet the ever increasing demands of both thermal efficiency low maintenance materials to combine both modern and traditional and authentic appearance of timber structures.

Materials are powder coated to a high quality finish and are available in any RAL or BS Colour of your choice. Different internal & external profile finishes are available (i.e ornate ogee, square or raked features) to suit your application.

System accommodates a multitude and different double glazed units thicknesses from 24mm – 35mm. Our D/G standard specification is 28mm thickness units Toughened Safety Glass – Low 'E' – Argon gas filled with a D/G U Value 1.2 W/m2.

D/G Units are available in Clear / Bronze / Green & Blue Tints ; Self cleaning finishes (Pilkington Active) and also Solar Controlled finishes such as Cool-Lite or Sun-cool just to name a few.



REF. 13883 [983] - THE CONSERVATORY DESIGN STUDIO

Job as shown above

Style - Mono Pitch

Size :- 2000mm Projection x 2400mm Width x 21 Deg Pitch - Powder Coated RAL 7015 Matt Grey

Accessories :- 28mm D/G Units

Special Features - Welded Outlet to side of gutter

Full Thermally Broken Roof Light System

This is a full aluminium thermally broken system to meet the ever increasing demands of both thermal efficiency low maintenance materials to combine both modern and traditional and authentic appearance of timber structures.

Materials are powder coated to a high quality finish and are available in any RAL or BS Colour of your choice. Different internal & external profile finishes are available (i.e ornate ogee, square or raked features) to suit your application.

System accommodates a multitude and different double glazed units thicknesses from 24mm – 35mm. Our D/G standard specification is 28mm thickness units (4mmx20mmx4mm) Toughened Safety Glass – Low 'E' – Argon gas filled with a D/G U Value 1.2 W/m².

D/G Units are available in Clear / Bronze / Green & Blue Tints ; Self cleaning finishes (Clear Shield or Pro-Active) and also Heat reflective finishes such as Cool-Lite or Sun-cool just to name a few.



REF. 6450-CWS

Job as shown above

Style - 15 o. Mono Pitched Roofs (Cumbria)

Size :- 3200mm Width x 1850mm Projection x 14 Deg Pitch - Powder Coated 007 Met. Silver and

Size :- 5200mm Width x 1850mm Projection x 14 Deg Pitch - Powder Coated 007 Met. Silver

Accessories :- Thermally Broken Windows & Doors

MONO PITCHED ROOF SYSTEM



6985mm x 1569mm



3645mm x 930mm

Full thermally broken roof light system, powder coated to RAL 7024 Satin. Glass with 28mm DG Units Low E, Argon Gas Filled Toughened Safety Glass. (DG U Vale 1.2W/2m2)

8630 [464] - Doorfix - AMPTON ROAD

